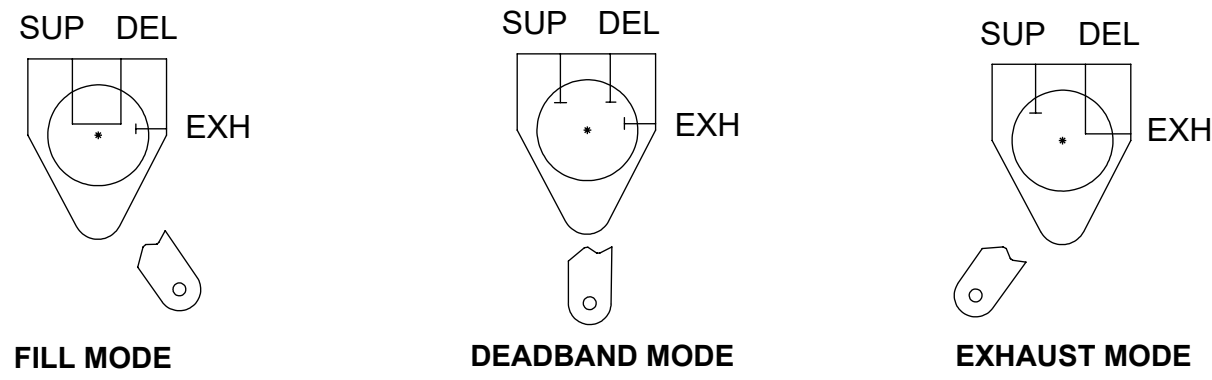


4

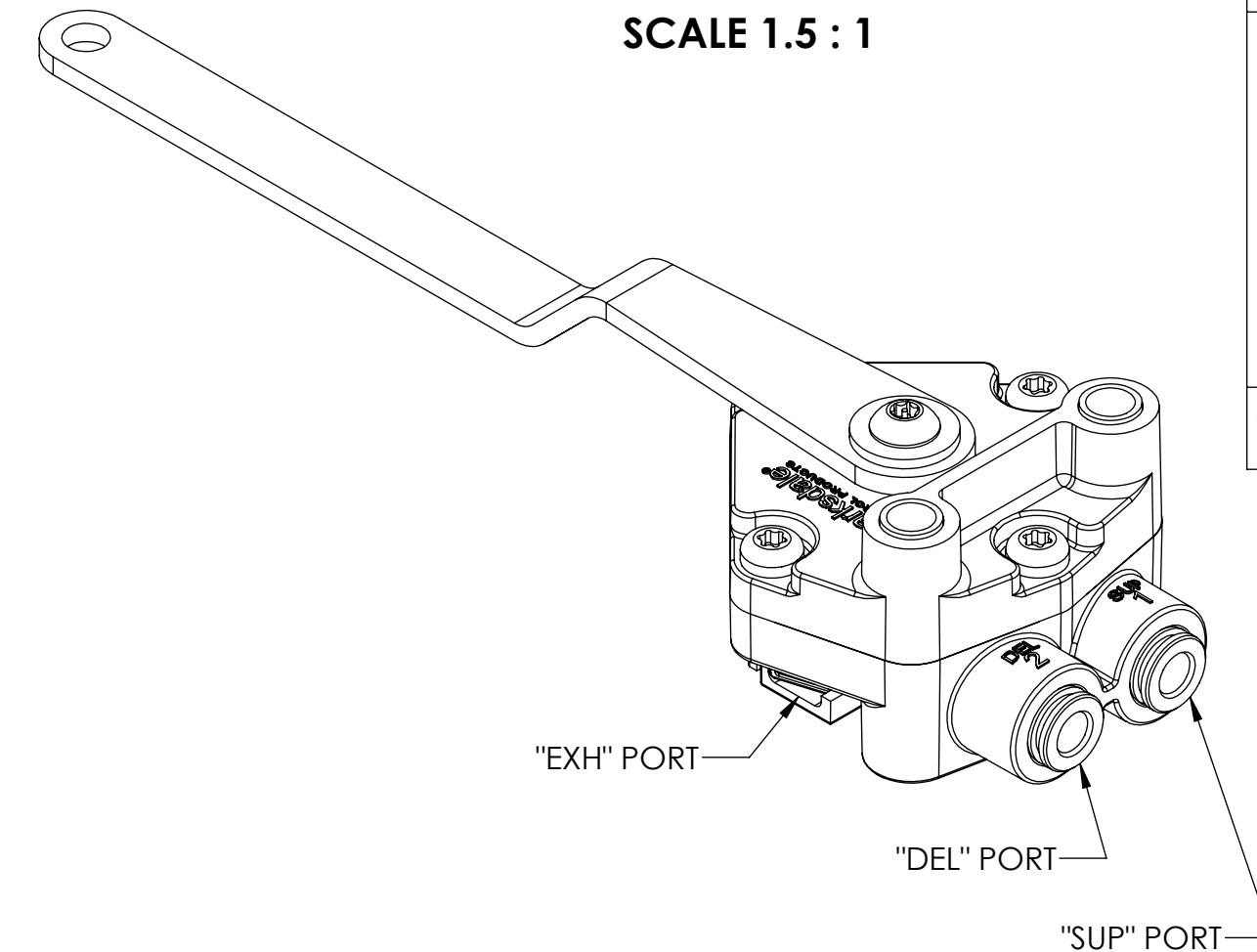
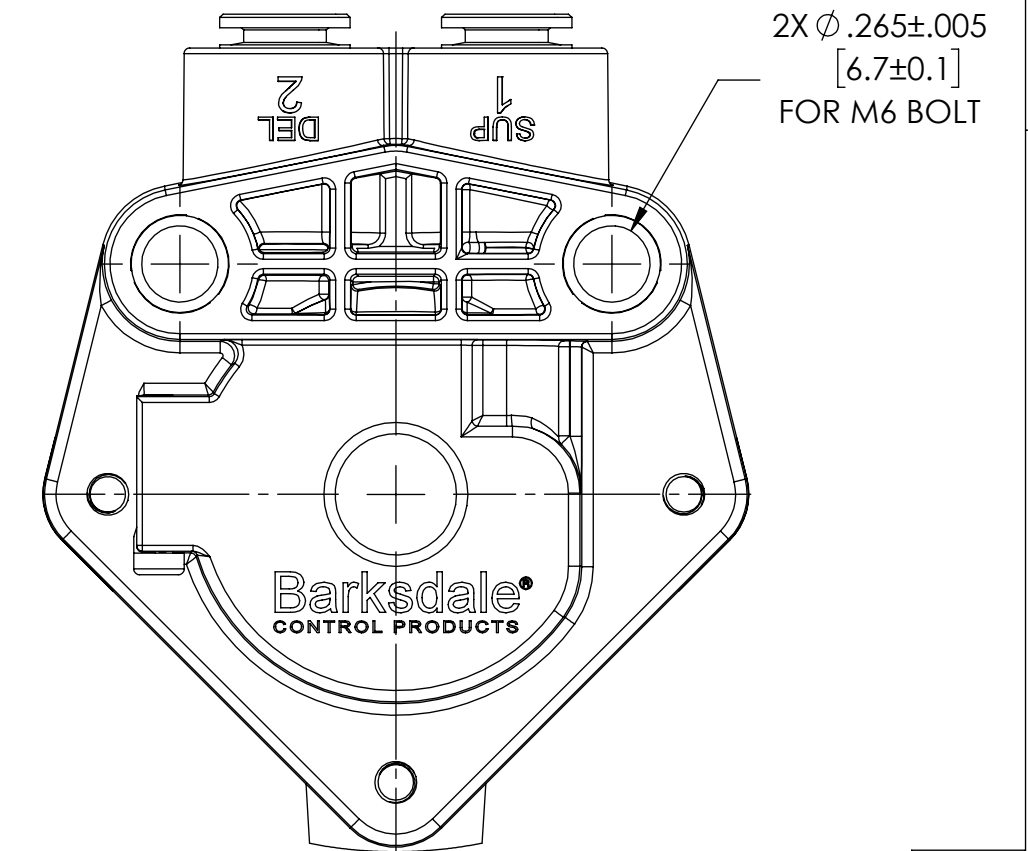
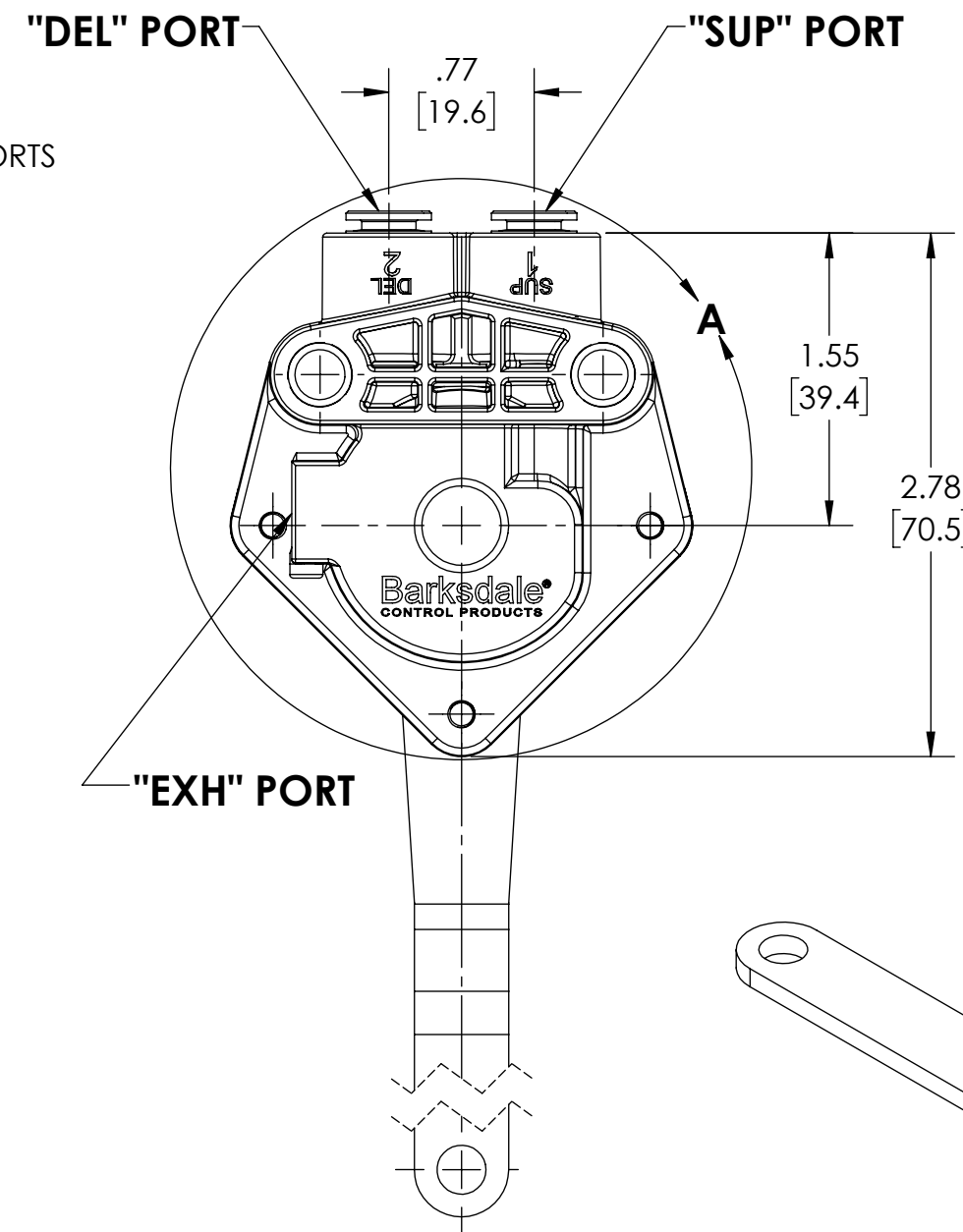
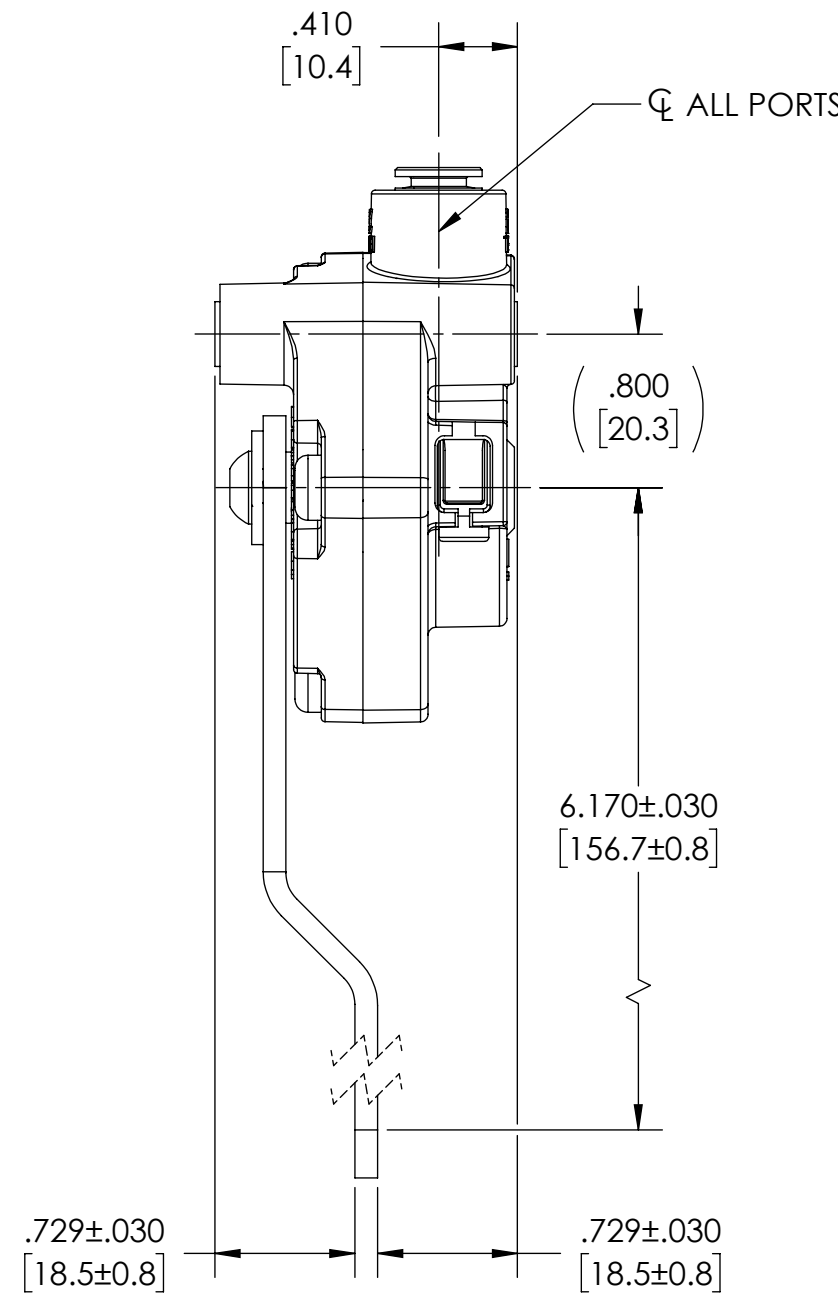
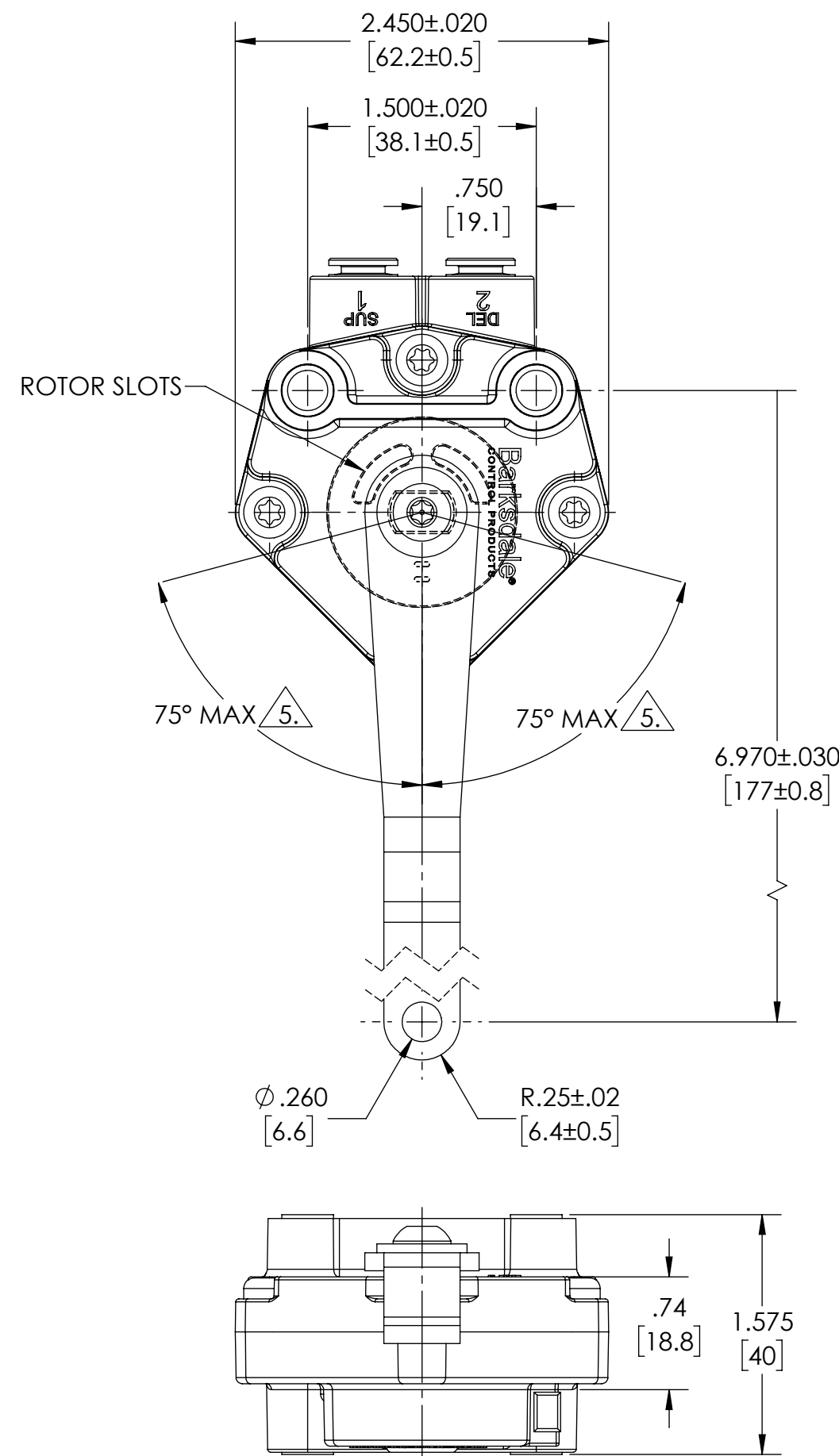
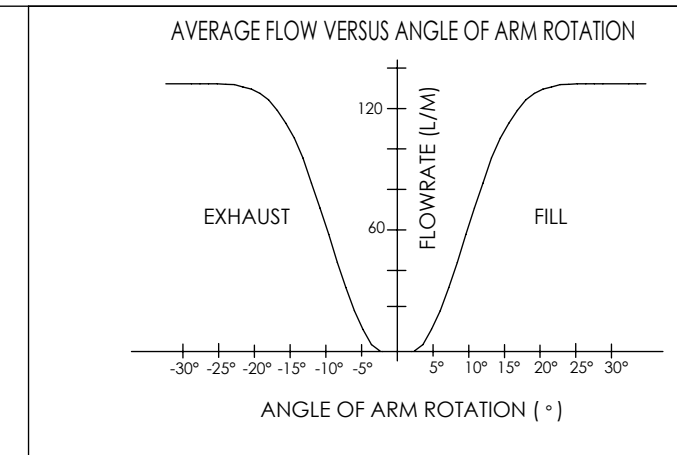
3

2

1



**FLOW PATTERN - VIEW FROM TOP OF VALVE**



- 7. MAXIMUM PERMISSIBLE LEAKAGE IS LESS THAN 4 SCCM AT 80 PSI.
- 6. DIMENSIONS IN BRACKETS ARE IN MILLIMETERS.
- 5. MAXIMUM HANDLE ROTATION FOR FILL OR EXHAUST IS 75°.
- 4. TEMPERATURE RATING: -40°F TO +185°F. (-40°C TO +85°C).
- 3. MATERIALS OF CONSTRUCTION:  
 ROTOR: ANODIZED ALUMINUM.  
 HOUSING, BODY : ENGINEERED STRUCTURAL POLYMER  
 O-RINGS: BUNA N.  
 PRESSURE SEALS: CORROSION RESISTANT STEEL.  
 SHAFT: LEADED STEEL NICKLE-PLATED.
- 2. AVERAGE DEADBAND 3.5 DEGREES, MAXIMUM DEADBAND 5.5 DEGREES.
- 1. PORTING: ALL PORTS 6mm PTC.

NOTES: UNLESS OTHERWISE SPECIFIED

DRAWN NITIN CHECKED APPROVED DATE 10-17-2019 DATE DATE	UNLESS OTHERWISE SPECIFIED DIMENSIONAL TOLERANCES ARE PER ANSI Y14.5-82 AND AS FOLLOWS: X ±.030 XX ±.010 XXX ±.005 ANGLE ±5° .010 FIM DIMENSIONS ARE TO BE MET AFTER PLATING. CBORES AND SPOTFACE .031 CORNER RADIUS. BREAK ALL CORNERS .010 R. REMOVE ALL BURRS. ALL MACHINED SURFACES TO BE 125 MAX.	<b>CAB AIR SUSPENSION VALVE</b> www.barksdale.com <b>Barksdale</b> CONTROL PRODUCTS <small>CRANE</small>	NEXT ASSEMBLY 982494 REFERENCE DPM DIST. <input type="checkbox"/> GmH 00011701 A 07-29-2020 PCO # REV. DATE	WEIGHT --- SCALE --- DWG. <b>C</b> <b>52520B-Q1</b> SHEET 1 OF 1	REV. <b>A</b> DWG. SIZE <b>52520B-Q1</b> REV. <b>A</b>
---	---	--	---	---	---

4

3

2

1